



Outstanding In Our Field

Agricultural Timber Range 2026



Why We're the Leading Choice for Agricultural Timber

✓ The UK's Largest Agricultural Timber Range

From dog kennels to gates, we have the largest range in the UK.

✓ Unmatched Stock Availability

3-day turnaround guarantee.

✓ Guaranteed Peace of Mind

Fully traceable, warrantied posts for total confidence.

✓ Single Point of Order, Single Delivery

Simple, efficient, and hassle-free.

✓ The Pioneers in Long-Life Machine Rounded Timber

Over 14 million Agricised® posts supplied.



Contents

page

Fencing

- Agricised - Stock Fencing 04
- FortiPost - Extended Life Timber Fencing 05
- DeerGuard - Durable Deer Fencing 06
- AgriPost - Budget & Temporary Fencing 07

Gates

- Croft 5 Bar Gates 08

Sawn Timber

- Sawn Timber Fencing 09
- Sawn Timber for Buildings 10
- Sawn Timber for Landscaping 11

Commercial Animal Housing

- Coops / Kennels / Hutches 12

Fence Panels

- Closeboard Panels 13
- Larchlap Dip Treated Fence Panels 14
- Larchlap Pressure Treated Panels 15
- Contemporary Designed Panels 16

Trellis and Edging

- Smooth Planed Trellis 17
- Log Roll & Border Section 17

How to Order

18/19



Founded in 1984, M&M Timber started as a family-run manufacturer and supplier of machine rounded agricultural fencing, serving agricultural co-operatives across the Midlands and Wales. As the business grew, so did its product range, expanding to include landscaping and playground timbers.

Today, M&M Timber stands as the UK's leading specialist in machine rounded timber posts, offering trusted solutions to the agricultural, commercial, landscaping and play sectors. The company integrates the entire supply chain - from sawmilling and assembly to storage and distribution - ensuring complete control and delivering unmatched fulfilment and service.

With a strong focus on innovation, capacity, and service, M&M Timber continues to invest significantly in its manufacturing infrastructure and stockholding capabilities.

Look out for our FSC®-certified products.



Reliable Long-Life Stock Fencing

- ✓ 15-Year Traceable Warranty
- ✓ Incised Spruce
- ✓ Machine Rounded
- ✓ 4-Way Anti-Twist Point

Type	Product Description	Imperial	Pack Qty	Product Code
Stake	1650mm x 65mm Agricised Round Pointed UC4	5'6" x 2.5"	297	FSH1650651
Stake	1650mm x 75mm Agricised Round Pointed UC4	5'6" x 3"	203	FSH1650751
Stake	1650mm x 85mm Agricised Round Pointed UC4	5'6" x 3.5"	150	FSH1650901
Stake	1650mm x 100mm Agricised Round Pointed UC4	5'6" x 4"	105	FSH1651001
Stake	1650mm x 115mm Agricised Round Pointed UC4	5'6" x 4.5"	72	FSH1651151
Stake	1800mm x 75mm Agricised Round Pointed UC4	6' x 3"	203	FSH180751
Stake	1800mm x 85mm Agricised Round Pointed UC4	6' x 3.5"	150	FSH180901
Stake	1800mm x 100mm Agricised Round Pointed UC4	6' x 4"	105	FSH181001
Stake	1800mm x 115mm Agricised Round Pointed UC4	6' x 4.5"	72	FSH181151
Stake	2400mm x 60mm Agricised Round Pointed UC4	8' x 2.5"	298	FSH240601
Strut/Stake	2400mm x 75mm Agricised Round Pointed UC4	8' x 3"	203	FSH240751
Strut/Stake	2400mm x 100mm Agricised Round Pointed UC4	8' x 4"	105	FSH241001
Strut	2400mm x 85mm Agricised Round Pointed UC4	8' x 3.5"	150	FSH240901FL
Intermediate	2100mm x 115mm Agricised Round Pointed UC4	7' x 4.5"	72	FSH211151
Strainer	2100mm x 135mm Agricised Round Pointed UC4	7' x 5.5"	60	FSH211351
Strainer	2100mm x 150mm Agricised Round Pointed UC4	7' x 6"	42	FSH211501
Strainer	2400mm x 135mm Agricised Round Pointed UC4	8' x 5.5"	60	FSH241351
Strainer	2400mm x 150mm Agricised Round Pointed UC4	8' x 6"	42	FSH241501
Strainer	2400mm x 175mm Agricised Round Pointed UC4	8' x 7"	30	FSH241751
Strainer	3000mm x 150mm Agricised Round Pointed UC4	10' x 6"	42	FSH301501
Gate Post	2400mm x 200mm Agricised Round Pointed UC4	8' x 8"	15	FSH242001



Lasts 3 x longer, comes with no quibble warranty and saves money over 15 years

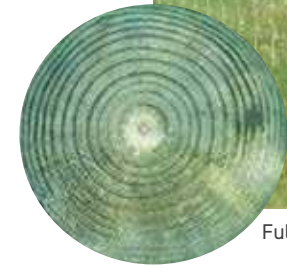


Agricised incisions allow treatment to penetrate deep into the post

Extended Life Timber Fencing

- ✓ 40-Year Traceable Warranty
- ✓ Slow-grown Pine
- ✓ Kiln Dried
- ✓ Full Sapwood Penetration
- ✓ Machine Rounded
- ✓ 4-Way Anti-Twist Point
- ✓ End Tag Recognition

Type	Product Description	Imperial	Pack Qty	Product Code
Stake	1650 x 85 Machine Rounded Pointed	5'6" x 3.5"	143	F40P1650901
Stake	1800 x 85 Machine Rounded Pointed	6' x 3.5"	143	F40P180901
Stake	1650 x 100 Machine Rounded Pointed	5'6" x 4"	99	F40P1651001
Stake	1800 x 100 Machine Rounded Pointed	6' x 4"	99	F40P181001
Stake	2700 x 100 Machine Rounded Pointed	9' x 4"	99	F40P271001
Strut	2400 x 85 Machine Rounded Pointed	8" x 3.5"	143	F40P240851
Strut	2400 x 100 Machine Rounded Pointed	8' x 4"	99	F40P241001
Strainer	2100 x 125 Machine Rounded Pointed	7' x 5"	42	F40P211251
Strainer	2100 x 150 Machine Rounded Pointed	7' x 6"	42	F40P211501
Strainer	2400 x 125 Machine Rounded Pointed	8' x 5"	56	F40P241251
Strainer	2400 x 150 Machine Rounded Pointed	8' x 6"	42	F40P241501
Strainer	3000 x 150 Machine Rounded Pointed	10' x 6"	42	F40P301501
Gate Post	2400 x 200 Machine Rounded Pointed	8' x 8"	20	F40P242001



Full Sapwood Penetration

FortiPost: The Ultimate 40 Year Warrantied Fencing Timber

When it comes to fencing, durability and reliability are non-negotiable. That's why FortiPost is setting a new industry standard with its 40 year warrantied fencing timbers. Made from slow-grown pine, carefully dried and conditioned for maximum preservative uptake, these posts are engineered for absolute longevity and performance. Whether for agricultural, equestrian, or commercial use, FortiPost delivers unmatched strength, stability, and peace of mind.

A Safer and More Cost-Effective Alternative

While creosote-treated posts have long been used for durability, they come with safety concerns during handling and installation. FortiPost provides a safer alternative without compromising on performance or longevity. Free from the hazards of creosote, it is easier and safer to work with, while also being more affordable than other creosote-free options. This makes it the smart choice for those seeking maximum durability at a competitive price.

Fully Traceable, No Sliding Scale - A Warranty You Can Trust

Unlike many warranties that operate on a sliding scale, where coverage diminishes over time, FortiPost's 40-year warranty remains solid for the entire duration. It is also fully traceable, ensuring that every post is backed by transparent, accountable quality control complete with end tag recognition in every post. In the unlikely event of failure, you can rest assured that the post in question would be replaced, giving you complete peace of mind.

High Performing Perimeter Animal Protection

- ✓ 15 and 30-Year Warranty
- ✓ Slow-grown Pine
- ✓ Kiln Dried
- ✓ Full Sapwood Penetration
- ✓ Peeled and Pointed
- ✓ 4-Way Anti-Twist Point
- ✓ End Tag Recognition



Type	Product Description	Warranty	Imperial	Pack Qty	Product Code
Deer Stake	2700 x 75-100 DeerGuard15 Peeled and Pointed Pine UC4	15 Year	9' x 3" - 4"	132	FP270751001
Deer Stake	2700 x 100-125 DeerGuard15 Peeled and Pointed Pine UC4	15 Year	9' x 4" - 5"	72	FP271001251
Deer Stake	3000 x 75-100 DeerGuard15 Peeled and Pointed Pine UC4	15 Year	10' x 3" - 4"	132	FP300751001
Deer Stake	3000 x 100-125 DeerGuard15 Peeled and Pointed Pine UC4	15 Year	10' x 4" - 5"	72	FP301001251
Deer Stake	3000 x 150-175 DeerGuard15 Peeled and Pointed Pine UC4	15 Year	10' x 6" - 7"	36	FP301501751
Deer Stake	3600 x 75-100 DeerGuard15 Peeled and Pointed Pine UC4	15 Year	12' x 3" - 4"	132	FP360751001
Deer Strainer	3600 x 150-175 DeerGuard15 Peeled and Pointed Pine UC4	15 Year	12' x 6" - 7"	36	FP361501751
Deer Strainer	3600 x 175 x 200 DeerGuard15 Peeled and Pointed Pine UC4	15 Year	12' x 7" - 8"	25	FP361752001
Deer Stake	2700 x 75-100 DeerGuard30 Peeled and Pointed Pine UC4	30 Year	9' x 3" - 4"	132	FPD3G270751001
Deer Stake	2700 x 100-125 DeerGuard30 Peeled and Pointed Pine UC4	30 Year	9' x 4" - 5"	72	FPD3G271001251
Deer Stake	3000 x 75-100 DeerGuard30 Peeled and Pointed Pine UC4	30 Year	10' x 3" - 4"	132	FPD3G300751001
Deer Strainer	3000 x 100-125 DeerGuard30 Peeled and Pointed Pine UC4	30 Year	10' x 4" - 5"	72	FPD3G301001251
Deer Strainer	3000 x 150-175 DeerGuard30 Peeled and Pointed Pine UC4	30 Year	10' x 6" - 7"	36	FPD3G301501751
Deer Strainer	3600 x 75-100 DeerGuard30 Peeled and Pointed Pine UC4	30 Year	12' x 3" - 4"	132	FPD3G360751001
Deer Strainer	3600 x 150-175 DeerGuard30 Peeled and Pointed Pine UC4	30 Year	12' x 6" - 7"	36	FPD3G361501751
Deer Strainer	3600 x 175 x 200 DeerGuard30 Peeled and Pointed Pine UC4	30 Year	12' x 7" - 8"	25	FPD3G361752001



M&M Timber DeerGuard provides a high-performing timber-fencing solution for boundary fencing across agricultural land, country estates and parks.

The fencing range of stakes, struts and strainers are ideal for perimeter solutions, where deer are grazing, but also to help protect land from wild deer in particular any new planting, young trees or hazel coppice.

Budget and Temporary Fencing

- ✓ Out of ground use
- ✓ Machined or Peeled
- ✓ UK Softwood
- ✓ 4-Way Anti-Twist Point
- ✓ Round and Half Round

A low-cost fencing solution for temporary applications



Type	Product Description	Imperial	Pack Qty	Product Code
Half Round Stake	1650mm x 100mm AgriPost Half Round Pointed	5'6" x 4"	231	F1651002
Part Machined	1650mm x 65mm Part Machined SG	5'6" x 2.5"	297	FSG1650631
Part Machined	1650mm x 85mm Part Machined SG	5'6" x 3.5"	150	FSG1650851
Part Machined	1800mm x 85mm Part Machined SG	6' x 3.5"	150	FSG1800851
Jump Pole	3600mm x 100mm Jump Poles	12' x 4"	100	F361003
Rail	3600mm x 100mm AgriPost Half Round Rails	12' x 4"	210	F3610041M





Croft 5 Bar Gates

- ✓ 5 bar diamond brace gates
- ✓ Planed premium or rough sawn
- ✓ CNC engineered components
- ✓ Fully housed angled cross rails
- ✓ Fits both lefthand or righthand requirements

High Precision Engineered Timber Gates

Crafted from high-precision engineered timber, this robust gate features a classic five-bar design. Its durable construction makes it ideal for use in fields, farms, driveways, and property entrances, offering both strength and timeless rural charm. The Croft Gate offers the ideal balance of form and function.



Croft Country



Croft Prestige

Product Description	Metric	Pack Qty	Product Code
4ft Croft Country Gate	1219mm x 1190mm	5	CFTCG4
10ft Croft Country Gate	3048mm x 1190mm	5	CFTCG10
12ft Croft Country Gate	3658mm x 1190mm	5	CFTCG12
3ft Croft Prestige Gate	912mm x 1220mm	5	CFTPG3
4ft Croft Prestige Gate	1219mm x 1220mm	5	CFTPG4
5ft Croft Prestige Gate	1524mm X 1220mm	3	CFTPG5
6ft Croft Prestige Gate	1809mm x 1220mm	3	CFTPG6
7ft Croft Prestige Gate	2133mm x 1220mm	Sold in singles or pack of 5	CFTPG7
8ft Croft Prestige Gate	2438mm x 1220mm	3	CFTPG8
9ft Croft Prestige Gate	2743mm x 1220mm	Sold in singles or pack of 5	CFTPG9
10ft Croft Prestige Gate	3048mm X 1220mm	5	CFTPG10
11ft Croft Prestige Gate	3552mm x 1220mm	Sold in singles or pack of 5	CFTPG11
12ft Croft Prestige Gate	3658mm x 1220mm	5	CFTPG12

Crafted for strength, style, and lasting performance, our Croft 5 Bar Gates feature a classic diamond brace design, ideal for both traditional and modern rural settings.

Available in either planed premium or rough sawn finishes, each gate is built using CNC-engineered components for precision and consistency. The fully housed angled cross rails enhance structural integrity, ensuring long-term durability and a quality fit. We use stainless steel fixings which ensures no nasty rust runs or stains.

Sawn Timber Fencing



Agricultural

Type	Product Description	Imperial	Product Code
Gate Post	2400 x 125 x 125 Gate Post 4WW UC4	8' x 5" x 5"	FSS2400125125PYR
Gate Post	2400 x 150 x 150 Gate Post 4WW UC4	8' x 6" x 6"	FSS2400150150PYR
Gate Post	2400 x 175 x 175 Gate Post 4WW UC4	8' x 7" x 7"	FSS2400175175PYR
Gate Post	2400 x 200 x 200 Gate Post 4WW UC4	8' x 8" x 8"	FSS2400200200PYR
Post and Rail	2100 x 125 x 75 Weathered Top UC4	7' x 5" x 3"	FSS2100125075WT
Post and Rail	2100 x 125 x 75 FlatTop Point UC4	7' x 5" x 3"	FSS2100125075PTD
Post and Rail	1800 x 125 x 75 Weathered Top UC4	6' x 5" x 3"	FSS1800125075WT
Rail	3660 x 100 x 38 Rail	12' x 4" x 1.5"	FSS3660100038
Rail	3660 x 88 x 38 Rail	12' x 3/5" x 1.5"	FSS3600088038
Rail	2400 x 100 x 47 Rail	8' x 4" x 2"	FSS2400100047
Rail	3600 x 100 x 47 Rail	12' x 4" x 2"	FSS3600100047
Rail	4800 x 100 x 47 Rail	16' x 4" x 2"	FSS4800100047

Domestic



Type	Product Description	Imperial	Product Code
Featheredge	1800 x 150 x 11 Featheredge	6' x 6" x 0.5"	FSS1800150022FE
Featheredge	3000 x 125 x 47 Cant Rail	10' x 5" x 2"	FSS3000125047
Featheredge	3600 x 75 x 75 Arris Rail	12' x 3" x 3"	FSS3600075037
Featheredge	2400 x 70 x 35 Panel Cap	8' x 2.5" x 1/5"	FSS2400070035CP
Featheredge	1650 x 150 x 11 Featheredge	5'6" x 6" x 0.5"	FSS1650150022FE
Featheredge	2400 x 150 x 11 Featheredge	8' x 6" x 0.5"	FSS2400150022FE
Featheredge	3600 x 150 x 11 Featheredge	12' x 6" x 0.5"	FSS3600150022FE
Featheredge	4200 x 150 x 11 Featheredge	14' x 6" x 0.5"	FSS4200150022FE
Featheredge	2400 x 45 x 45 Recessed Post	8' x 2" x 2"	FSS2400045045RCSSCP
Gate Post	2100 x 175 x 175 Gate Post 4WW UC4	7' x 7" x 7"	FSS2100175175
Gate Post	2100 x 150 x 150 Gate Post 4WW UC4	7' x 6" x 6"	FSS2100150150
Gravel Board	1800 x 150 x 22 Board	6' x 6" x 1"	FSS1800150022BRD
Gravel Board	2800 x 150 x 22 Board	8' x 6" x 1"	FSS2400150022BRD
Gravel Board	3000 x 150 x 22 Board	10' x 6" x 1"	FSS3000150022BRD
Gravel Board	3600 x 150 x 22 Board	12' x 6" x 1"	FSS3600150022BRD
Pale	900 x 70 x 20 Round Top Pale Planed	3' x 2.5" x 0.75"	FSS0900070020RTP
Pale	1200 x 70 x 20 Round Top Pale Planed	4' x 2.5" x 0.75"	FSS1200070020RTP
Post	1800 x 100 x 100 Incised Post UC4	6' x 4" x 4"	FSS1800100100
Post	2400 x 100 x 100 Incised Post UC4	8' x 4" x 4"	FSS2400100100
Post	3000 x 100 x 100 Incised Post UC4	10' x 4" x 4"	FSS3000100100
Post	2400 x 75 x 75 Incised Post UC4	8' x 3" x 3"	FSS2400075075
Post	1800 x 75 x 75 Incised Post UC4	6' x 3" x 3"	FSS1800075075
Post and Rail	1800 x 125 x 75 Flat Top Pointed UC4	6' x 5" x 3"	FSS1800125075PTD

Sawn Timber for Buildings

- ✓ Structural Timbers – robust and reliable for framing and load-bearing needs
- ✓ Heavy Duty Purlins – designed for roof structures and superior strength
- ✓ York Boards – perfect for cladding and boarding applications
- ✓ All components are pressure treated for enhanced durability and long-lasting protection against the elements



Product Description	Type	Imperial	Product Code
4800 x 200 x 22 Board	Board	16' x 8" x 1"	FSS4800200022BRD
4800 x 50 x 25 Batten	Buildings	16' x 2" x 1"	FSS4800050025
3600 x 125 x 19mm Shiplap	Cladding	12' x 5" x 0.75"	FSS3600125019SLAP
4200 x 125 x 19 T&G	Cladding	14' x 5" x 0.75"	FSS4200125019TNG
4200 x 150 x 25 T&G	Cladding	14' x 6" x 1"	FSS4200150025TNG
4570 x 200 x 47 Dungwall	Dungwall	15' x 8" x 2"	FSS4570200047DW
6100 x 200 x 47 Dungwall	Dungwall	20' x 8" x 2"	FSS6100200047DW
2400 x 50 x 47 Seasoned	Graded/Construction	8' x 2" x 2"	FSS2400050047
3600 x 50 x 47 Seasoned	Graded/Construction	12' x 2" x 2"	FSS3600050047
2400 x 75 x 47 Seasoned	Graded/Construction	8' x 3" x 2"	FSS2400075047
3600 x 75 x 47 Seasoned	Graded/Construction	12' x 3" x 2"	FSS3600075047
3600 x 100 x 47 Graded	Graded/Construction	12' x 4" x 2"	FSS3600100047GR
4800 x 100 x 47 Graded	Graded/Construction	16' x 4" x 2"	FSS4800100047GR
4800 x 100 x 75 Graded	Graded/Construction	16' x 4" x 3"	FSS4800100075GR
3600 x 150 x 47 Graded	Graded/Construction	12' x 6" x 2"	FSS3600150047GR
4800 x 150 x 47 Graded	Graded/Construction	16' x 6" x 2"	FSS4800150047GR
4800 x 200 x 47 Graded	Graded/Construction	16' x 8" x 2"	FSS4800200047GR
4800 x 75 x 47 Graded	Graded/Construction	16' x 3" x 2"	FSS4800075047GR
3600 x 75 x 47 Graded	Graded/Construction	12' x 3" x 2"	FSS3600075047GR
4800 x 100 x 22 Board	Gravel Board	16' x 4" x 1"	FSS4800100022BRD
4200 x 150 x 22 Board	Gravel Board	14' x 6" x 1"	FSS4200150022BRD
4800 x 150 x 22 Board	Gravel Board	16' x 6" x 1"	FSS4800150022BRD
4570 x 125 x 75 Purlin	Purlin	15' x 5" x 3"	FSS4570125075PUR
6100 x 150 x 75 Purlin	Purlin	20' x 6" x 3"	FSS6096150075PUR
4500 x 175 x 63 Purlin	Purlin	15' x 7" x 2.5"	FSS4500175063PUR
4570 x 175 x 75 Purlin	Purlin	15' x 7" x 3"	FSS4500175075PUR
4800 x 175 x 75 Purlin	Purlin	16' x 7" x 3"	FSS4800175075PUR
4570 x 225 x 75 Purlin	Purlin	15' x 9" x 3"	FSS4572225075PUR
6100 x 225 x 75 Purlin	Purlin	20' x 9" x 3"	FSS6100225075PUR

Built to perform in demanding environments, our sawn timber range offers high-quality, pressure-treated solutions ideal for agricultural and structural applications.

Whether you're building stables, barns, or outbuildings, our sawn timber delivers strength, reliability, and great value.

Sawn Timber for Landscaping

- ✓ Sleepers – perfect for retaining walls, raised beds, and edging
- ✓ Treated for a 15-year service life, ensuring lasting structural integrity
- ✓ Pressure treated to resist rot, decay, and insect damage



Type	Product Description	Imperial	Product Code
Deck Board	3600 x 125 x 38mm UC4	12' x 5" x 1.5"	FSS3600125038DB
Deck Board	4800 x 125 x 38mm UC4	16' x 5" x 1.5"	FSS4800125038DB
Sleeper	2400 x 200 x 100 Sleeper UC4	8' x 8" x 4"	FSS2400200100SLP
Sleeper	2400 x 250 x 125 Sleeper UC4	8' x 10" x 5"	FSS2400250125SLP



Sleeper UC4



Sleeper UC4

Engineered for outdoor performance, our sawn landscaping timber is pressure treated to Use Class 4, making it ideal for ground contact applications and long-term durability. A reliable choice for any landscaping project where strength and longevity matter.

Commercial Animal Housing



Chicken Coop and Run

An ideal starter home for a broody hen, the wooden chicken coop comes with a detachable 4ft run - providing both safety and space for your poultry to roam.



Large Hen House

Spacious enough for up to six chickens, the large wooden hen house includes an external nesting box with a convenient access door for easy egg collection.



Large Dog Kennel and Run

Keep your dog sheltered from the elements while still offering outdoor freedom with a sturdy wooden kennel and integrated run.



Dog Kennel

Designed to offer protection and open-air space, the wooden dog kennel allows your pet to stay dry and enjoy the outdoors simultaneously.



Rabbit Hutch

Perfect for rabbits or guinea pigs, the hutch and run combo provides ample living space for one or two small pets in a secure and comfortable environment.



Small Starter Coop

A great option for a pair of hens and their chicks, the wooden starter coop is built to keep your poultry safe, warm, and dry.



Large Raised Chicken Coop

Ideal for accommodating up to six chickens, the raised design helps keep poultry protected from damp ground while offering secure, dry shelter.

Product Description	Type	Size	Product Code
Chicken Coop and Run	Commercial Animal Housing	75cm(h) x 199cm(w) x 102cm(d)	AHLRUN
Dog Kennel	Commercial Animal Housing	119cm(h) x 106cm(w) x 128cm(d)	AHDGKEN
Large Dog Kennel & Run	Commercial Animal Housing	181cm(h) x 307cm(w) x 138cm(d)	AHDGRUN
Large Hen House	Commercial Animal Housing	149cm(h) x 163cm(w) x 112cm(d)	AHHENH
Large Raised Chicken Coop	Commercial Animal Housing	160cm(h) x 258cm(w) x 141cm(d)	AHRARK
Rabbit Hutch	Commercial Animal Housing	123cm(h) x 194cm(w) x 74cm(d)	AHRABH
Small Starter Coop	Commercial Animal Housing	62cm(h) x 134cm(w) x 77cm(d)	AHSSTCOOP

Closeboard Panels

Our Strongest UK Panel.

The heavy duty Closeboard Panel from Forest is a strong, sturdy and secure panel, perfect for privacy and security along garden boundaries.

- ✓ Available in 5 heights - 6ft (1.83m), 5ft (1.52m), 4ft (1.22m) and 3ft (0.92m)
- ✓ Featuring 46 x 32 perimeter frame, braced with 2 (or 1) 45mm batten(s)
- ✓ Finished with 8mm thick overlapping square boards arranged vertically and completed with a profiled panel cap to increase longevity
- ✓ Manufactured from FSC™ certified timber and other controlled sources



Dip Treated Closeboard Panel



Pressure Treated Closeboard Panel



Product Description	Type	Size	Pack Qty	Product Code
Dip Treated Closeboard Panel	Panel	92(h) x 183(w)cm	20	VBP63
Dip Treated Closeboard Panel	Panel	122(h) x 183(w)cm	20	VBP64
Dip Treated Closeboard Panel	Panel	152(h) x 183(w)cm	20	VBP65
Dip Treated Closeboard Panel	Panel	183(h) x 183(w)cm	20	VBP66
Pressure Treated Closeboard Panel	Panel	92(h) x 183(w)cm	20	VBP63PTR
Pressure Treated Closeboard Panel	Panel	122(h) x 183(w)cm	20	VBP64PTR
Pressure Treated Closeboard Panel	Panel	152(h) x 183(w)cm	20	VBP65PTR
Pressure Treated Closeboard Panel	Panel	183(h) x 183(w)cm	20	VBP66PTR

Fencing that's made to last

We believe creating a space you're proud of starts with a product we're proud of and our Larchlap collection is no exception. Designed and built in Worcestershire, the traditional British Larchlap panel has been trusted for over 50 years.



LAP GATES



10 YEARS
Anti-Rot Guarantee



Dip Treated Lap Gate



15 YEARS
Anti-Rot Guarantee



Pressure Treated Square Lap Gate

Product Description	Type	Size	Pack Qty	Product Code
Dip Treated Lap Gate	Gate	182(h) x 91(w)cm	20	FLG63
Pressure Treated Square Treated Lap Gate	Gate	182(h) x 91(w)cm	20	GSL63PTR
Pressure Treated Larchlap Panel - Signature	Panel	90(h) x 183(w)cm	20	SIGN63
Pressure Treated Larchlap Panel - Signature	Panel	120(h) x 183(w)cm	20	SIGN64
Pressure Treated Larchlap Panel - Signature	Panel	150(h) x 183(w)cm	20	SIGN65
Pressure Treated Larchlap Panel - Signature	Panel	180(h) x 183(w)cm	20	SIGN66
Pressure Treated Larchlap Panel - Premium	Panel	90(h) x 183(w)cm	20	PREM63
Pressure Treated Larchlap Panel - Premium	Panel	120(h) x 183(w)cm	20	PREM64
Pressure Treated Larchlap Panel - Premium	Panel	150(h) x 183(w)cm	20	PREM65
Pressure Treated Larchlap Panel - Premium	Panel	180(h) x 183(w)cm	20	PREM66
Dip Treated Larchlap Panel - Heritage	Panel	90(h) x 183(w)cm	20	HERI63
Dip Treated Larchlap Panel - Heritage	Panel	120(h) x 183(w)cm	20	HERI64
Dip Treated Larchlap Panel - Heritage	Panel	150(h) x 183(w)cm	20	HERI65
Dip Treated Larchlap Panel - Heritage	Panel	180(h) x 183(w)cm	20	HERI66



15 YEARS
Anti-Rot Guarantee

NEW



Pressure Treated Larchlap Panel - Signature

- ✓ Uniform square edge design for a clean, contemporary finish
- ✓ Constructed with **5 vertical strengthening battens** for added durability
- ✓ **Pressure treated** for deep, long lasting protection and a **15-year anti-rot guarantee** – no gravel board required
- ✓ Framed all round with a **profiled finishing panel cap**
- ✓ Four heights – 6ft (1.8m), 5ft (1.5m), 4ft (1.2m) and 3ft (0.9m)
- ✓ Manufactured from FSC™ Timber and other controlled sources



15 YEARS
Anti-Rot Guarantee

NEW



Pressure Treated Larchlap Panel - Premium

- ✓ Uniform square edge design for a clean, contemporary finish
- ✓ Constructed with **4 vertical strengthening battens** for added durability
- ✓ **Pressure treated** for deep, long lasting protection and a **15-year anti-rot guarantee** – no gravel board required
- ✓ Framed all round with a **replacable finishing panel cap**
- ✓ Four heights – 6ft (1.8m), 5ft (1.5m), 4ft (1.2m) and 3ft (0.9m)
- ✓ Manufactured from FSC™ Timber and other controlled sources



10 YEARS
Anti-Rot Guarantee

NEW



Dip Treated Larchlap Panel - Heritage

- ✓ Uniform square edge design for a clean, contemporary finish
- ✓ Constructed with **4 vertical strengthening battens** for added durability
- ✓ **Dip treated** preservative applied to the outside of the timber results in a **10 year anti-rot guarantee**, only requiring periodic re-treatment
- ✓ Framed all round with a **replacable finishing panel cap**
- ✓ Four heights – 6ft (1.8m), 5ft (1.5m), 4ft (1.2m) and 3ft (0.9m)
- ✓ Manufactured from FSC™ Timber and other controlled sources

Contemporary Designed Panels

Substantial and stylish panels with a contemporary look.

Gives a modern feel to boundary fencing and will transform any garden.

The double slatted panels feature slats mounted alternately on the front and back of the panel. With this arrangement, the panels offer a degree of privacy unlike single-sided slatted panels, whilst still letting some light and air flow through. This makes the panel equally suitable for boundary fencing or for use as screening or partitioning.

The timber is pressure treated to give a 15-year anti-rot guarantee and the panel can also be used without gravel boards. Available in 4 heights - 6ft (1.80m), 5ft (1.50m), 4ft (1.20m) and 3ft (0.9m).



Contemporary Single Slatted Panel



Contemporary Double Slatted Panel

Product Description	Type	Size	Pack Qty	Product Code
Contemporary Single Slatted Panel	Panel	90(h) x 180(w)cm	20	VENH3MM
Contemporary Single Slatted Panel	Panel	120(h) x 180(w)cm	20	VENH4MM
Contemporary Single Slatted Panel	Panel	150(h) x 180(w)cm	20	VENH5MM
Contemporary Single Slatted Panel	Panel	180(h) x 180(w)cm	20	VENH6MM
Contemporary Double Slatted Panel	Panel	91(h) x 180(w)cm	25	VENHHM3MM
Contemporary Double Slatted Panel	Panel	121(h) x 180(w)cm	25	VENHHM4MM
Contemporary Double Slatted Panel	Panel	151(h) x 180(w)cm	25	VENHHM5MM
Contemporary Double Slatted Panel	Panel	180(h) x 180(w)cm	25	VENHHM6MM
Double Slatted Gate	Gate	180(h) x 90(w)cm	2	VENHGM6MM



Double Slatted Gate

Trellis and Edging

Smooth Planed Garden Trellis.

Traditional Square Garden Trellis with sturdy 10mm deep x 26mm wide battens that are spaced 111mm apart to give plenty of room for climbing plants to weave between. Ideal for making a feature of a wall by training flowering plants. The attractive square pattern trellis is constructed using smooth planed battens with rounded edges for a quality finish and also benefits from having been pressure treated to protect it from rot.

- ✓ High quality traditional trellis ideal for creating a feature on a wall with climbing plants
- ✓ Made with smooth-planed, rounded and pressure treated battens
- ✓ Can be mounted vertically or horizontally
- ✓ Pressure treated to ensure longevity
- ✓ 15-year anti-rot guarantee
- ✓ Delivered flat packed for easy self-assembly



Smooth Planed Trellis



Log Roll

Made of attractive half log rounds, this flexible edging is a great value solution for neatening up your borders or pathways.



Border Section

Easy to install fixed length edging, with integral timber spikes - a quick way to transform and neatening up your borders.

Product Description	Type	Size	Pack Qty	Product Code
Smooth Planed Trellis	Trellis	180(h) x 30(w)cm	10	PTP61MM
Smooth Planed Trellis	Trellis	180(h) x 60(w)cm	10	PTP62MM
Smooth Planed Trellis	Trellis	180(h) x 90(w)cm	10	PTP63MM
Log Roll	Log Roll	15(h) x 180(w) x 5(d)cm	80	FBR06MM
Log Roll	Log Roll	23(h) x 180(w) x 5(d)cm	60	FBR09MM
Log Roll	Log Roll	30(h) x 180(w) x 5(d)cm	40	FBR12MM
Border Section	Border Section	15(h) x 102(w)cm	52	FBS06MM
Border Section	Border Section	23(h) x 102(w)cm	39	FBS09MM
Border Section	Border Section	30(h) x 102(w)cm	26	FBS12MM



Hunt House Sawmills
Clows Top
Near Kidderminster
Worcestershire
DY14 9HY

T 0333 777 7892 E sales@mmtimber.co.uk
www.mmtimber.co.uk

M&M Timber is a Division of Forest Garden Limited